



# Total separation solenoid valve 3/2 way N.C. Direct acting

**31KPCF1KRS30**

## PRESENTATION:

Direct acting S.V. for interception of fluids compatible with the construction materials.

Minimum operational pressure is not required.

The materials used and the tests carried out ensure maximum reliability and duration.

**USE:** Suitable for applications sectors Vending,  
Medical and Chemical Industry

**PIPES:** G 1/8

**COIL:** 8W - Ø 13  
BDA - BSA 155°C (class F)  
BDV 180°C (class H)

**COIL HOUSING AND COIL FORMER MATERIAL ARE  
MADE BY 100% VIRGIN MATERIAL.**

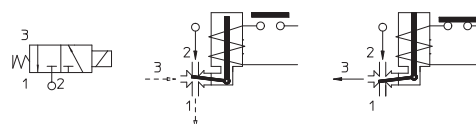
Max. allowable pressure (PS) 8 bar

Ambient temperature:

See coils catalogue page for its compatibility.



Gaskets	Temperature		Medium
S=VMQ (silikon)	+ 2°C	+ 100°C	Water, arias and neutral fluids



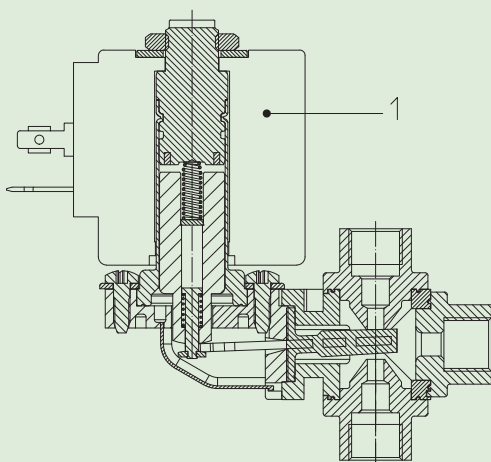
Pipe ISO 228/1	Code	Max viscosity		Ø mm	Kv l/mn	Power watt	Pressione		
		cSt	°E				min bar	M.O.P.D.	
G 1/8	31KPCF1KRS30	21	~ 3	3	4,5	8	0	AC bar	DC bar
								1	1

## Note

Max torque for fittings assembly 2 Nm. .

In case glue is used to seal the fittings, verify the compatibility with body materiall (PSU).

The "ODE " reserves the right to carry out technical and aesthetic modifications without prior notification.



### MATERIALS:

<b>Body</b>	PSU (Polysulphone)
<b>Armature tube</b>	Brass - UNI EN 12164 CW614N
<b>Fixed core</b>	Stainless steel AISI series 400
<b>Plunger</b>	Stainless steel AISI series 400
<b>Spring</b>	Stainless steel AISI series 300
<b>Seal</b>	S = VMQ
<b>Orifice</b>	PSU (Polysulphone)

### On request:

<b>Connector</b>	Pg 9 o Pg 11
<b>Connector conformity</b>	ISO 4400

### FEATURES:

<b>Electrical conformity</b>	IEC 335
<b>Protection degree</b>	IP 65 EN 60529 (DIN 40050) if equipped with connector IP 65.

### SPARE PARTS:

- Coil:**  
See coils list

### DIMENSIONS:

