



# Solenoid valve 3/2 way N.C. Direct acting - Hose connection exhaust NSF Certified

31JPBXP1V12-T0  
÷  
31JPBXR23

## PRESENTATION:

Direct acting S.V. for interception of fluids compatible with the construction materials.

Minimum operational pressure is not required.

The materials used and the tests carried out ensure maximum reliability and duration.

USE: Vending

PIPES: Plug in connection

COIL: 5W - Ø 10  
LBA 155°C (class F)  
LBF - LBV 180°C (class H)

**COIL HOUSING AND COIL FORMER MATERIAL ARE  
MADE BY 100% VIRGIN MATERIAL.**

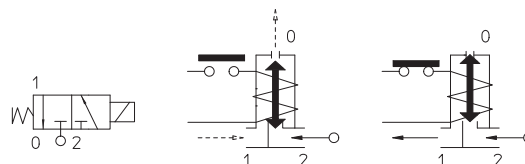
Max. allowable pressure (PS) 16 bar

Ambient temperature:

See coils catalogue page for its compatibility.



Gaskets	Temperature		Medium
V=FKM (fluoroelastomer)	- 10°C	+ 140°C	Water, air, steam



Pipe	Code	Fig.	Max viscosity		Ø mm	Kv	Power	Pressure		
			cSt	°E		l/mn	watt	min	M.O.P.D	
					bar			AC bar	DC bar	
Plug in connection	31JPBXP1V12-T0 ●	1	12	~ 2	1,2*	0,75	5	0	15	-
	31JPBXR1V12	2								
	31JPBXP1V23-T0 ●	1	37	~ 5	2,3*	2,1			5	
	31JPBXR1V23	2								



## Note

\* 3rd way exhaust= Ø 1,7 mm | Max torque nut assembly 2Nm | In case glue is used to seal the fittings, verify the compatibility with body material (PPS) | For application with steam, please consult our Technical Service | Available on request and with minimum quantities.

The "ODE" reserves the right to carry out technical and aesthetic modifications without prior notification.

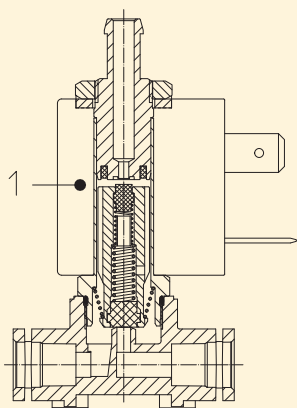


Fig. 1

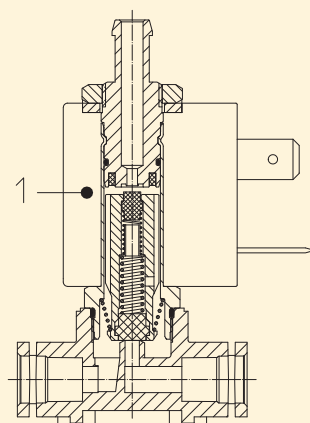


Fig. 2

#### MATERIALS:

<b>Body</b>	PPS
<b>Armature tube (fig.1)</b>	Stainless steel AISI series 300
<b>Armature tube (fig.2)</b>	Brass - UNI EN 12165 CW617N
<b>Fixed core</b>	Stainless steel AISI series 400
<b>Plunger</b>	Stainless steel AISI series 400
<b>Phase displacement ring (fig.1)</b>	Gold plated copper
<b>Phase displacement ring (fig.2)</b>	Copper
<b>Spring</b>	Stainless steel AISI series 300
<b>Seal</b>	V=FKM
<b>Orifice</b>	PPS

#### On request:

<b>Connector</b>	Pg 9 or Pg 11
<b>Connector conformity</b>	ISO 4400

#### FEATURES:

<b>Electrical conformity</b>	IEC 335
<b>Protection degree</b>	IP 65 EN 60529 (DIN 40050) with coil fitted by connector.

#### SPARE PARTS:

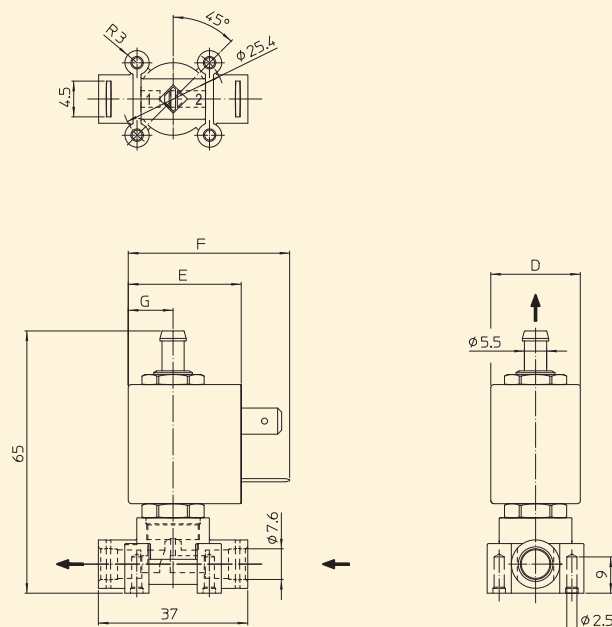
##### 1. Coil:

See coils list

#### ACCESSORIES:

Tube (int.Ø 2 mm; ext.Ø 4mm)  
for fast fitting  
Code R453130/  
Tube with male fitting  
Code R453154/  
Tube with double male fitting  
(see catalogue page)

#### DIMENSIONS:



COIL TYPE	POWER ABSORPTION			DIMENSIONS			
	W ==	Hold VA ~	Inrush VA ~	D mm	E mm	F mm	G mm
L	5	10	15	22	27,5	39,5	11