



Solenoid valve 3/2 way N.C. Direct acting - Hose connection exhaust NSF Certified

31JPAXP1V12-T0
÷
31JPAXRV23

PRESENTATION:

Direct acting S.V. for interception of fluids compatible with the construction materials.

Minimum operational pressure is not required.

The materials used and the tests carried out ensure maximum reliability and duration.

USE: Vending

PIPES G 1/8 male

COIL: 5W - Ø 10
LBA 155°C (class F)
LBF - LBV 180°C (class H)

**COIL HOUSING AND COIL FORMER MATERIAL ARE
MADE BY 100% VIRGIN MATERIAL.**

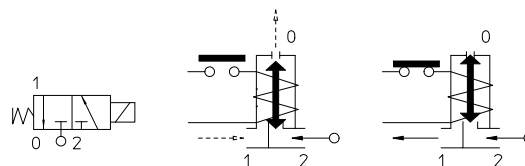
Max. allowable pressure (PS) 16 bar

Ambient temperature:

See coils catalogue page for its compatibility.



| Gaskets | Temperature | | Medium |
|-------------------------|-------------|---------|-------------------|
| V=FKM (fluoroelastomer) | - 10°C | + 140°C | Water, air, steam |



| Pipe ISO 228/1 | Code | Fig. | Max viscosity | | Ø mm | Kv | Power | Pressure | | |
|-------------------|------------------------------|------|---------------|-----|---------|------|-------|----------|------------|----------|
| | | | cSt | °E | | l/mn | | watt | min bar | M.O.P.D. |
| | | | | | | | | | | |
| G 1/8 male | 31JPAXP1V12 -T0 [●] | 1 | 12 | ~ 2 | 1,2* | 0,75 | 5 | 0 | 15 | - |
| | 31JPAXRV12 | 2 | | | | | | | | |
| | 31JPAXP1V23 -T0 [●] | 1 | 37 | ~ 5 | 2,3* | 2,1 | | | 5 | |
| | 31JPAXRV23 | 2 | | | | | | | | |



Note

* 3rd way exhaust= Ø 1,7 mm | Max torque for fittings and nut assembly 2Nm | In case glue is used to seal the fittings, verify the compatibility with body material (PPS) | For application with steam, please consult our Technical Service.

The "ODE" reserves the right to carry out technical and aesthetic modifications without prior notification.

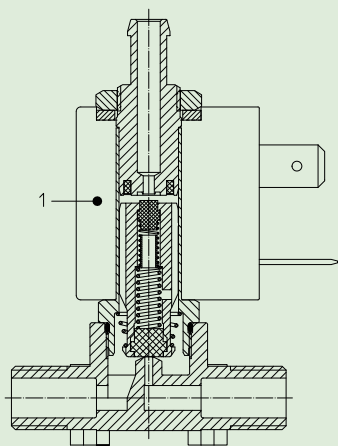


Fig. 1

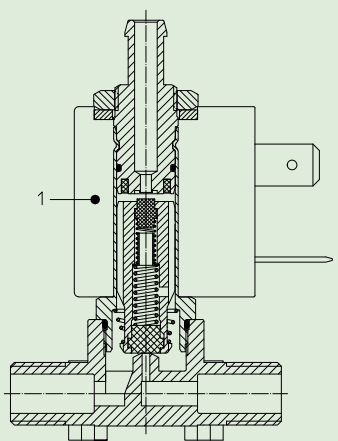


Fig. 2

MATERIALS:

| | |
|--|---------------------------------|
| Body | PPS |
| Armature tube (fig.1) | Stainless steel AISI series 300 |
| Armature tube (fig.2) | Brass - UNI EN 12165 CW617N |
| Fixed core | Stainless steel AISI series 400 |
| Plunger | Stainless steel AISI series 400 |
| Phase displacement ring (fig.1) | Gold plated copper |
| Phase displacement ring (fig.2) | Copper |
| Spring | Stainless steel AISI series 300 |
| Seal | V=FKM |
| Orifice | PPS |

On request:

| | |
|-----------------------------|---------------|
| Connector | Pg 9 or Pg 11 |
| Connector conformity | ISO 4400 |

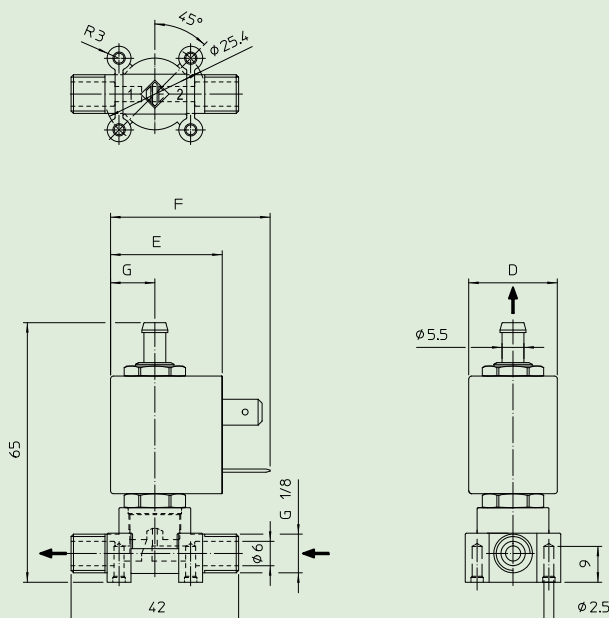
FEATURES:

| | |
|------------------------------|--|
| Electrical conformity | IEC 335 |
| Protection degree | IP 65 EN 60529 (DIN 40050) with coil fitted by connector. |

SPARE PARTS:

- Coil:**
See coils list

DIMENSIONS:



| COIL TYPE | POWER ABSORPTION | | | DIMENSIONS | | | |
|--------------|------------------|--------------|----------------|------------|---------|---------|---------|
| | W --- | Hold VA ~ | Inrush VA ~ | D mm | E mm | F mm | G mm |
| L | 5 | 10 | 15 | 22 | 27,5 | 39,5 | 11 |