



Solenoid valve 2/2 way N.C. Direct acting

21JN1R0V12-OX
÷
21JN1R0V23-OX

PRESENTATION:

Direct acting S.V. for interception of fluids compatible with the construction materials.

Minimum operational pressure is not required.

The materials used and the tests carried out ensure maximum reliability and duration.

Components, in contact with fluid, oils and greases free and compatible with oxygen for Industrial use.

USE: Automation
Chemical

PIPES: G 1/8

COILS:
2,5W - Ø 10
LBA 155°C (class F)
5W - Ø 10
LBA 155°C (class F)
LBF - LBV 180°C (class H)

**COIL HOUSING AND COIL FORMER MATERIAL ARE
MADE BY 100% VIRGIN MATERIAL.**

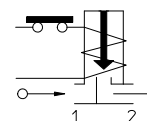
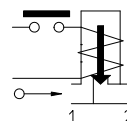
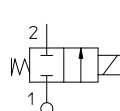
Max. allowable pressure (PS) 25 bar

Ambient temperature:

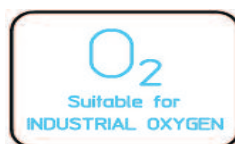
See coils catalogue page for its compatibility.



| Gaskets | Temperature | | Medium |
|-------------------------|-------------|--------|--------|
| V=FKM (fluoroelastomer) | - 10°C | + 60°C | Oxygen |

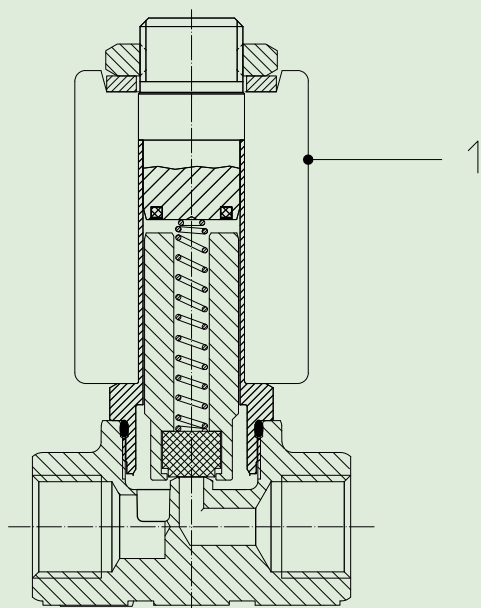


| Pipe ISO 228/1 | Code | Ø mm | Kv | Power | Pressure | | |
|-------------------|---------------|-------------|------|-------|------------|----------|--------|
| | | | l/mn | watt | min bar | M.O.P.D. | |
| | | | | | | | AC bar |
| G 1/8 | 21JN1R0V12-OX | 1,2 | 1 | 2,5 | 0 | 20 | 3,5 |
| | | | | 5 | | 25 | 12 |
| | 21JN1R0V23-OX | 2,3 | 2,3 | 2,5 | | 6 | - |
| | | | | 5 | | 18 | 8 |



Note Don't use as a safety Valve.

The "ODE" reserves the right to carry out technical and aesthetic modifications without prior notification.



MATERIALS:

| | |
|--------------------------------|---|
| Body | Brass |
| Armature tube | Stainless steel AISI series 300 |
| Fixed core | Stainless steel AISI series 400 |
| Plunger | Stainless steel AISI series 400 |
| Phase displacement ring | Copper - Cu 99,9% |
| Spring | Stainless steel AISI series 300 |
| Seal | V=FKM (compatible with O ₂) |
| Orifice | Brass |

On request:

| | |
|-----------------------------|---------------|
| Connector | Pg 9 or Pg 11 |
| Connector conformity | ISO 4400 |

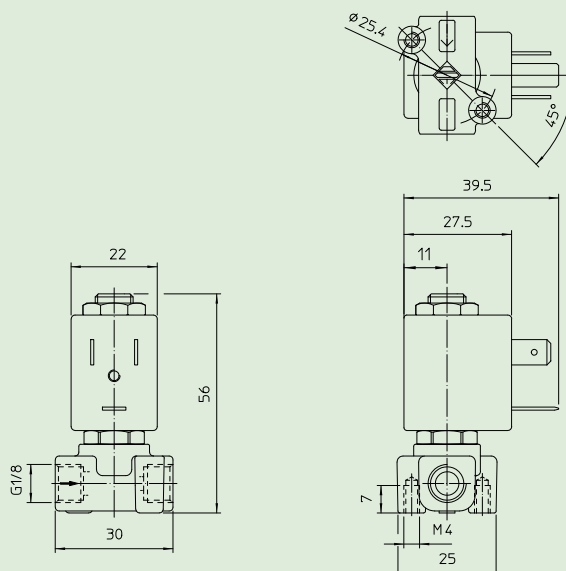
FEATURES:

| | |
|------------------------------|--|
| Electrical conformity | IEC 335 |
| Protection degree | IP 65 EN 60529 (DIN 40050) with coil fitted by connector. |

SPARE PARTS:

- Coil:**
See coils list

DIMENSIONS:



| COIL TYPE | POWER ABSORPTION | | |
|--------------|------------------|--------------|----------------|
| | W == | Hold VA ~ | Inrush VA ~ |
| L | 2,5 | 5 | 7 |
| | 5 | 10 | 15 |