



## Solenoid valve 2/2 way N.C. Combined operation

21IH3K1 V150  
÷  
21IH8K1 V400-S

### PRESENTATION:

Combined operation S.V. for interception of fluids compatible with the construction materials.

Minimum operational pressure is not required.

The materials used and the tests carried out ensure maximum reliability and duration.

**USE:** Automation - Heating - Chemistry

**PIPES:** G 3/8 - G 1 1/2

**COILS:**

8W - Ø 13	
BDA - BSA	155°C (class F)
BDV	180°C (class H)
12W - Ø 13	
UDA	155°C (class F)
14W - Ø 13	
GDA - GDS	155°C (class F)
GDH - GDV	180°C (class H)

**COIL HOUSING AND COIL FORMER MATERIAL ARE MADE BY 100% VIRGIN MATERIAL.**

Max. allowable pressure (PS) 16 bar

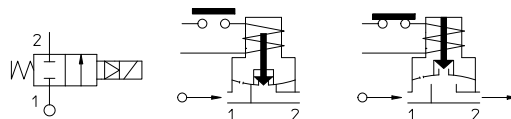
Ambient temperature:

See coils catalogue page for its compatibility.



Gaskets	Temperature		Medium
<b>V</b> =FKM + PA (fluoroelastomer+polyamide)	- 10°C	+140°C	Mineral oils (2°E), gasoline gas oil
<b>B</b> = NBR + PA (nitrile rubber+polyamide)	- 10°C	+ 90°C	Air, inert gas, water

For seals other than FKM replace the letter "V" with the ones corresponding to the other seals. E.I. 21IH3K1 **B**150.



Pipe ISO 228/1	Code	Max viscosity		Ø mm	Kv l/mn	Power watt	Pressure		
		cSt	°E				min bar	M.O.P.D. AC bar DC bar	
G 3/8	21IH3K1 V150	12	~ 2	15	40	8	0	14	6
								-	14
G 1/2	21IH4K1 V160			16	50	8		14	6
						12		-	14
G 3/4	21IH5K1 V200			20	60	8		14	6
						12		-	14
G 1	21IH6K1 V250			25	140	8		14	3
						12		-	8
G 1 1/4	21IH7K1 V350			35	300	14		14	-
	21IH7K1 V350-S							-	7
G 1 1/2	21IH8K1 V400			40	340	14		-	
	21IH8K1 V400-S					-		7	

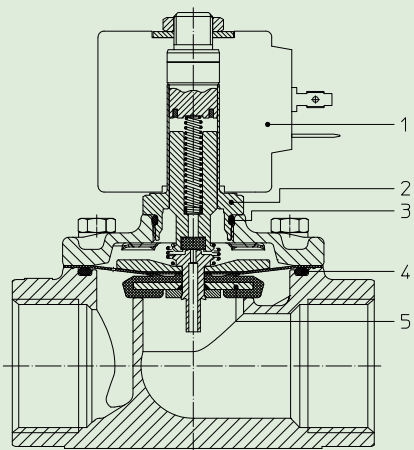
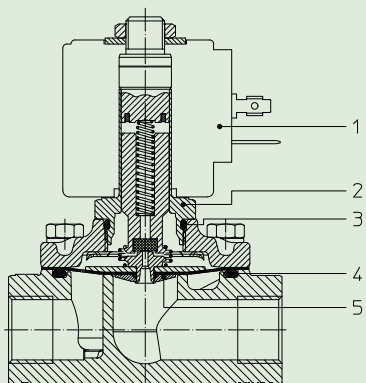


**CE Approval**

(Pressure Equipment Directive 97/23/CE)

for S.V. 21IH7÷21IH8..-S

The "ODE" reserves the right to carry out technical and aesthetic modifications without prior notification.


**MATERIALS:**

<b>Body</b>	Stainless steel AISI 316
<b>Armature tube</b>	Stainless steel AISI 316
<b>Fixed core</b>	Stainless steel AISI series 400
<b>Plunger</b>	Stainless steel AISI series 400
<b>Phase displacement ring</b>	Gold plated copper
<b>Spring</b>	Stainless steel AISI series 300
<b>Seal</b>	Standard: V=FKM+PA On request: B=NBR+PA
<b>Orifice</b>	Stainless steel AISI 316

**On request:**

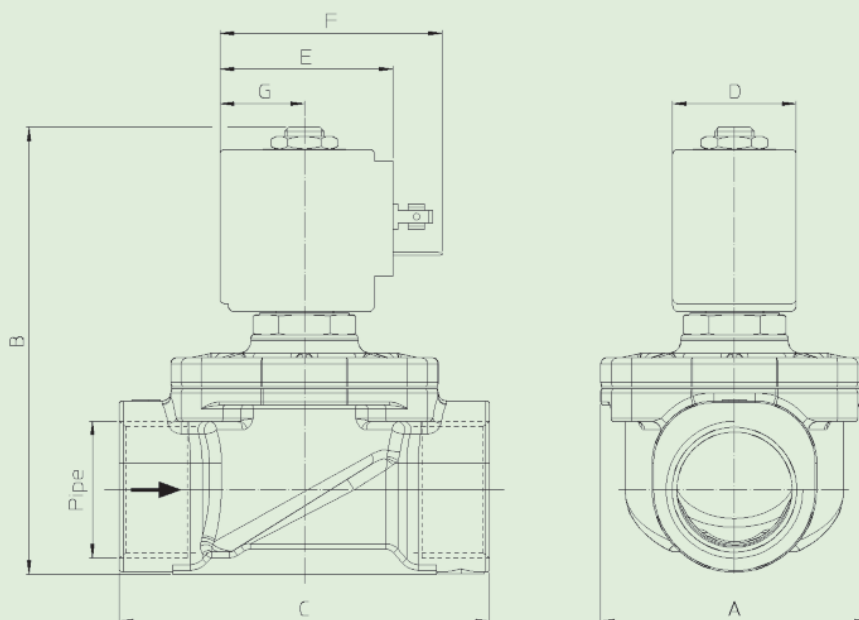
<b>Connector</b>	Pg 9 o Pg 11
<b>Connector conformity</b>	ISO 4400

**FEATURES:**

<b>Electrical conformity</b>	IEC 335
<b>Protection degree</b>	IP 65 EN 60529 (DIN 40050) with coil fitted by connector.

**SPARE PARTS:**

<b>1. Coil:</b>	G 3/4	Code R452899/V
See coils list	G 1	Code R452846/V
<b>2. Complete plunger:</b>	G 1 1/4 ÷ G 1 1/2	Code R452904/V
Code R450811		
<b>3. Gasket O-Ring:</b>		<b>MAINTENANCE KIT:</b>
Code R990000/V		G 3/8 ÷ G 1/2
<b>4. Gasket O-Ring:</b>		KTGIH3K1 V15=4+5
G 3/8 ÷ G 1/2	Code R990105/V	G 3/4
G 3/4	Code R992103/V	KTGIH5K1 V20=4+5
G 1	Code R992109/V	G 1
G 1 1/4 ÷ G 1 1/2	Code R992101/V	KTGIH6K1 V25=4+5
<b>5. Complete diaphragm with plunger:</b>		G 1 1/4 ÷ G 1 1/2
G 3/8 ÷ G 1/2	Code R452894/V	KTGIH7K1 V35=4+5

**DIMENSIONS:**


Type	Pipe ISO 228/1	A mm	B mm	C mm
21IH3K1 V150	G 3/8	52	92	68
21IH4K1 V160	G 1/2			
21IH5K1 V200	G 3/4	58	100	75
21IH6K1 V250	G 1	65	109	90
21IH7K1 V350	G 1 1/4	94	126	128
21IH7K1 V350-S				
21IH8K1 V400				
21IH8K1 V400-S	G 1 1/2			

COIL TYPE	POWER ABSORPTION			DIMENSIONS			
	W ---	Hold VA ~	Inrush VA ~	D mm	E mm	F mm	G mm
B	8	14,5	25	30	42	54	20,5
U	12	23	35	36	48	60	23,5
G	14	27	43	52	55	67	25