

2-PC. FLANGED END BALL VALVE

FEATURES

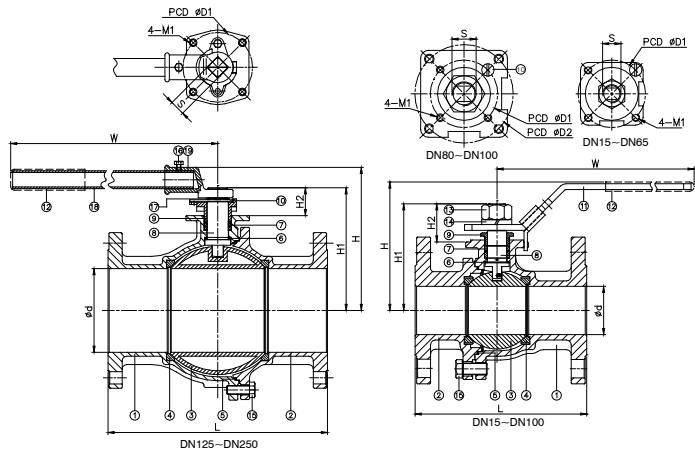
2019S

- Full port, 1/2"-10" (DN15-DN250)
- W.P. : PN16/40
- W.T. : -20°C-200°C (-4°F-392°F)
- Investment casting
- Blow-out proof stem
- Anti-static device (option)
- Locking device
- ISO 5211 Mounting pad
- TA-Luft approved (option)
- ISO 5211 Direct mounting pad - 2019SD (option)



- Flange dimension: DIN 2501
- Face to face: DIN 3202 part1 - F4/F5

ITEM	PARTS	MATERIAL	
1	BODY	1.4408	1.0619
2	CAP		
3	SOLID BALL	ASTM A351-CF8M	
	HOLLOW BALL	ASTM A240-316	
4	SEAT	PTFE / RTFE / TFM 1600	
5	SEAL	PTFE	
6	THRUST WASHER		
7	PACKING	ASTM A276-316	
8	STEM		
9	GLAND	AISI 304	
10	STOP PIN	STAINLESS STEEL	
11	HANDLE		
12	HANDLE SLEEVE	PVC	
13	STEM NUT	AISI 304	
14	SPRING WASHER		
15	BOLT	AISI 304	
16	BOLT		
17	CIRCLIPS FOR SHAFT	AISI 304	
18	STEEL TUBE		
19	WRENCH BLOCK		



DN	d	L	H	H1	H2	W	S	D1	D2	M1	M2	ISO 5211
15	15	115	85.7	57.2	23.7	169	8	42	-	M5	-	F04
20	20	120	87.5	59	23.5	169	8	42	-	M5	-	F04
25	25	125	103	73.5	29.5	205.5	10	50	-	M6	-	F05
32	32	130	108	78	29.5	205.5	10	50	-	M6	-	F05
40	38	140	126	100.9	39.4	267	12	70	-	M8	-	F07
50	50	150	133	107.4	39.4	267	12	70	-	M8	-	F07
65	63	170	142	116.1	38.6	298	12	70	-	M8	-	F07
80	76	180	165	139	43	390	15	70	102	M8	M10	F07/F10
100	96	190	183	157	43	390	15	70	102	M8	M10	F07/F10
125	125	325	239.6	199	52	743	27	125	-	M12	-	F12
150	150	350	256.5	220	50	743	27	125	-	M12	-	F12
200	200	400	332.5	300.5	85.5	840	36	140	-	M16	-	F14
250	250	450	378	345.5	85.5	1050	36	140	-	M16	-	F14

unit:mm

NPS	d	L	H	H1	H2	W	S	D1	D2	M1	M2	ISO 5211
1/2"	0.59	4.53	3.37	2.25	0.93	6.65	0.31	1.65	-	M5	-	F04
3/4"	0.79	4.72	3.44	2.32	0.93	6.65	0.31	1.65	-	M5	-	F04
1"	0.98	4.92	4.06	2.89	1.16	8.09	0.39	1.97	-	M6	-	F05
1-1/4"	1.26	5.12	4.25	3.07	1.16	8.09	0.39	1.97	-	M6	-	F05
1-1/2"	1.5	5.51	4.96	3.97	1.55	10.51	0.47	2.76	-	M8	-	F07
2"	1.97	5.91	5.24	4.23	1.55	10.51	0.47	2.76	-	M8	-	F07
2-1/2"	2.48	6.69	5.59	4.57	1.52	11.73	0.47	2.76	-	M8	-	F07
3"	2.99	7.09	6.5	5.47	1.69	15.35	0.59	2.76	4.02	M8	M10	F07/F10
4"	3.78	7.48	7.2	6.18	1.69	15.35	0.59	2.76	4.02	M8	M10	F07/F10
5"	4.92	12.8	9.43	7.83	2.05	29.25	1.06	4.92	-	M12	-	F12
6"	5.91	13.78	10.1	8.66	1.97	29.25	1.06	4.92	-	M12	-	F12
8"	7.87	15.75	13.09	11.83	3.37	33.07	1.42	5.51	-	M16	-	F14
10"	9.84	17.72	14.88	13.6	3.37	41.34	1.42	5.51	-	M16	-	F14

unit:in



MODEL: 2019S / 2019SD

PRESSURE-TEMPERATURE RATING

