

3-PC. SCREWED END BALL VALVE

2013KMD



TESTED AND CERTIFIED FIRE SAFE TO API 607 API 608 DESIGN

Size range :

1/2"-1" : 2000 WOG
1-1/4"-2" : 1500 WOG
2-1/2"-4" : 1000 WOG

End Connection :

2011KMD - Socket Weld End
2012KMD - Butt Weld End
2013KMD - Screwed End

Valve Materials :

316 Stainless Steel
Carbon Steel

Ball & Stem Material :

316 Stainless Steel

Service Applications :

Hydraulic	Chemical
Steam	Oil / Gas
Oxygen	Food Processing
Vacuum	Dry / Liquid Chlorine
Thermal Fluids	

Seat Materials :

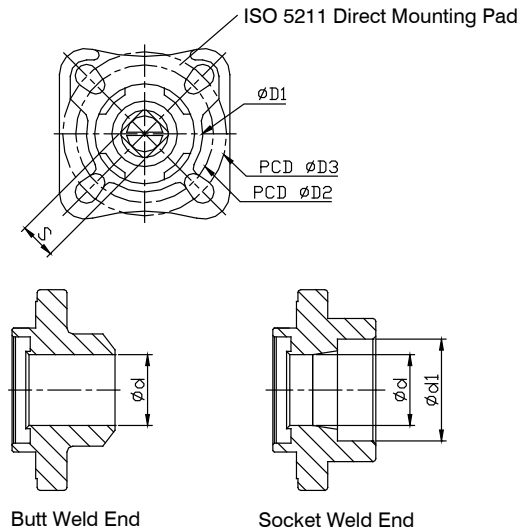
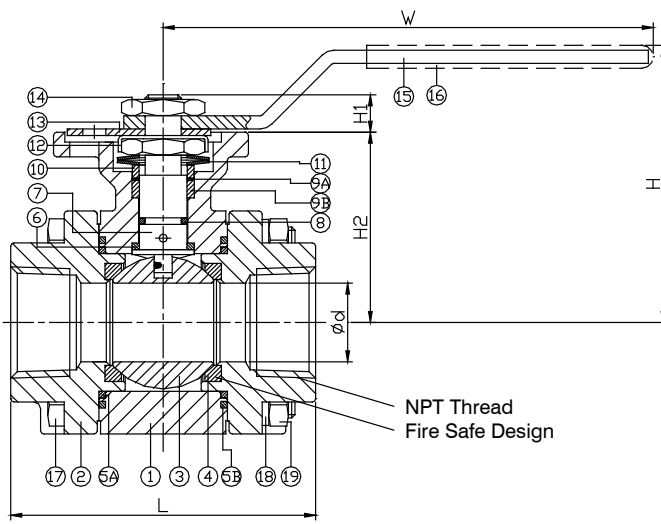
Teflon (PTFE)
Reinforced Teflon (RTFE)
TFE+25% Carbon
DELTRIN
PEEK
TFM1600

NACE MR0175

- ISO 5211 Direct mounting pad
- ISO 15848 fugitive emission approved (option)
- Spring return handle (option)

3-PC. SCREWED END BALL VALVE

2013KMD

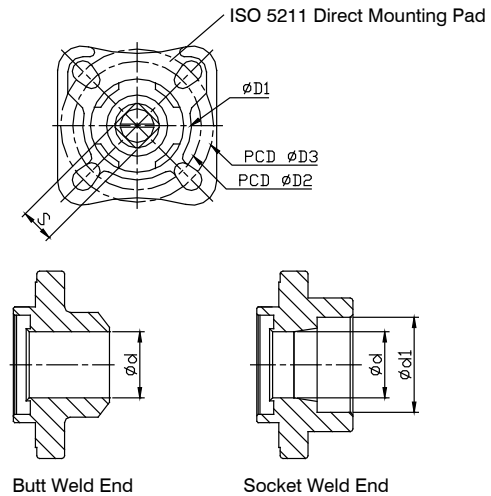
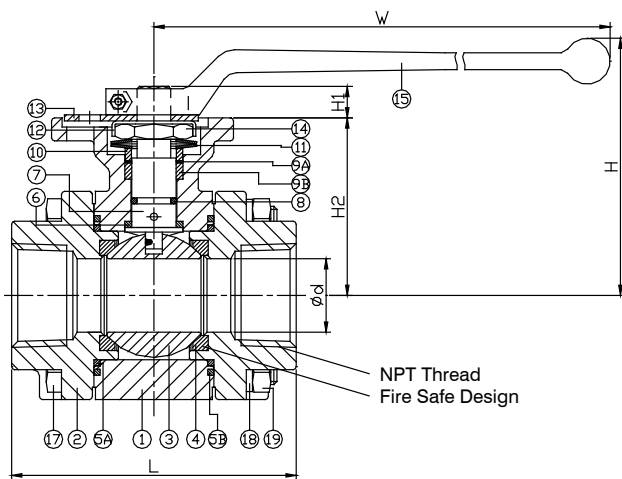


DN	d	d1	L	H	H1	H2	W	S	D1	D2	D3	ISO 5211
15	15	22	75	64	8.5	43	114.5	9	31	36	42	F03/F04
20	20	27.5	80	67	9	46	114.5	9	31	36	42	F03/F04
25	24	34.5	93	80.9	11	58	140	11	35.5	42	50	F04/F05

unit:mm

NPS	d	d1	L	H	H1	H2	W	S	D1	D2	D3	ISO 5211
1/2"	0.59	0.87	2.95	2.52	0.33	1.69	4.51	0.35	1.22	1.42	1.65	F03/F04
3/4"	0.79	1.08	3.15	2.64	0.35	1.81	4.51	0.35	1.22	1.42	1.65	F03/F04
1"	0.94	1.36	3.66	3.19	0.43	2.28	5.51	0.43	1.4	1.65	1.97	F04/F05

unit:in



DN	d	d1	L	H	H1	H2	W	S	D1	D2	D3	ISO 5211
32	30	43	110	98.5	11	62.8	197.5	11	35.5	42	50	F04/F05
40	38	49	120	119	14	74.5	247.5	14	56	50	70	F05/F07
50	50	61.2	140	119	14	82	247.5	14	56	50	70	F05/F07

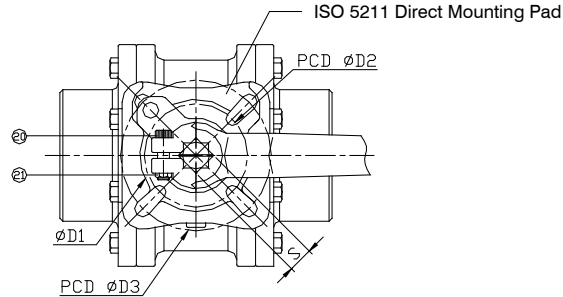
unit:mm

NPS	d	d1	L	H	H1	H2	W	S	D1	D2	D3	ISO 5211
1-1/4"	1.18	1.69	4.33	3.88	0.43	2.47	7.78	0.43	1.4	1.65	1.97	F04/F05
1-1/2"	1.5	1.93	4.72	4.69	0.55	2.93	9.74	0.55	2.2	1.97	2.76	F05/F07
2"	1.97	2.41	5.51	4.69	0.55	3.23	9.74	0.55	2.2	1.97	2.76	F05/F07

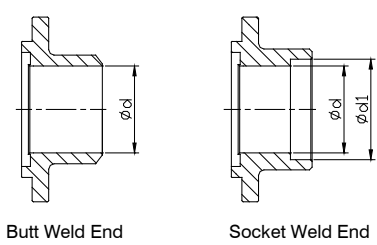
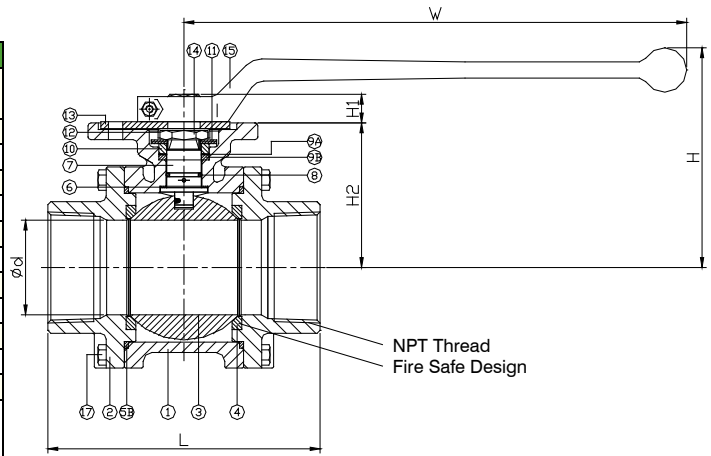
unit:in

3-PC. SCREWED END BALL VALVE

2013KMD



ITEM	PARTS	MATERIAL	
1	BODY	ASTM A351-CF8M	ASTM A216-WCB
2	CAP		
3	BALL	ASTM A351-CF8M	
4	SEAT	PTFE / RTFE / CTFE / TFM 1600	
5A	SEAL A	CTFE	
5B	SEAL B	GRAPHITE	
6	THRUST WASHER	CTFE	
7	STEM	ASTM A276-316	
8	O-RING	VITON	
9A	PACKING A	CTFE	
9B	PACKING B	GRAPHITE	
10	GLAND RING	AISI 304	
11	BELLEVILLE WASHER	AISI 301	
12	LOCK WASHER		
13	STOPPER	AISI 304	
14	NUT		
15	HANDLE	STAINLESS STEEL	
16	HANDLE SLEEVE	PVC	
17	BOLT		
18	SPRING WASHER		
19	NUT	AISI 304	
20	BOLT		
21	NUT		



DN	d	d1	L	H	H1	H2	W	S	D1	D2	D3	ISO 5211
65	64	74	184.2	146.8	17	96.5	340	17	76	70	102	F07/F10
80	75	90	204	158.9	17	108.6	340	17	76	70	102	F07/F10
100	96	115.5	240	184	22	131	340	22	100	102	125	F10/F12

unit:mm

NPS	d	d1	L	H	H1	H2	W	S	D1	D2	D3	ISO 5211
2-1/2"	2.56	2.91	7.25	5.78	0.67	3.8	13.39	0.67	2.99	2.76	4.02	F07/F10
3"	2.95	3.54	8.03	6.26	0.67	4.28	13.39	0.67	2.99	2.76	4.02	F07/F10
4"	3.78	4.55	9.45	7.24	0.87	5.16	13.39	0.87	3.94	4.02	4.92	F10/F12

unit:in